

Advanced
Engineering

Hitachi Tool

HITACHI
Inspire the Next

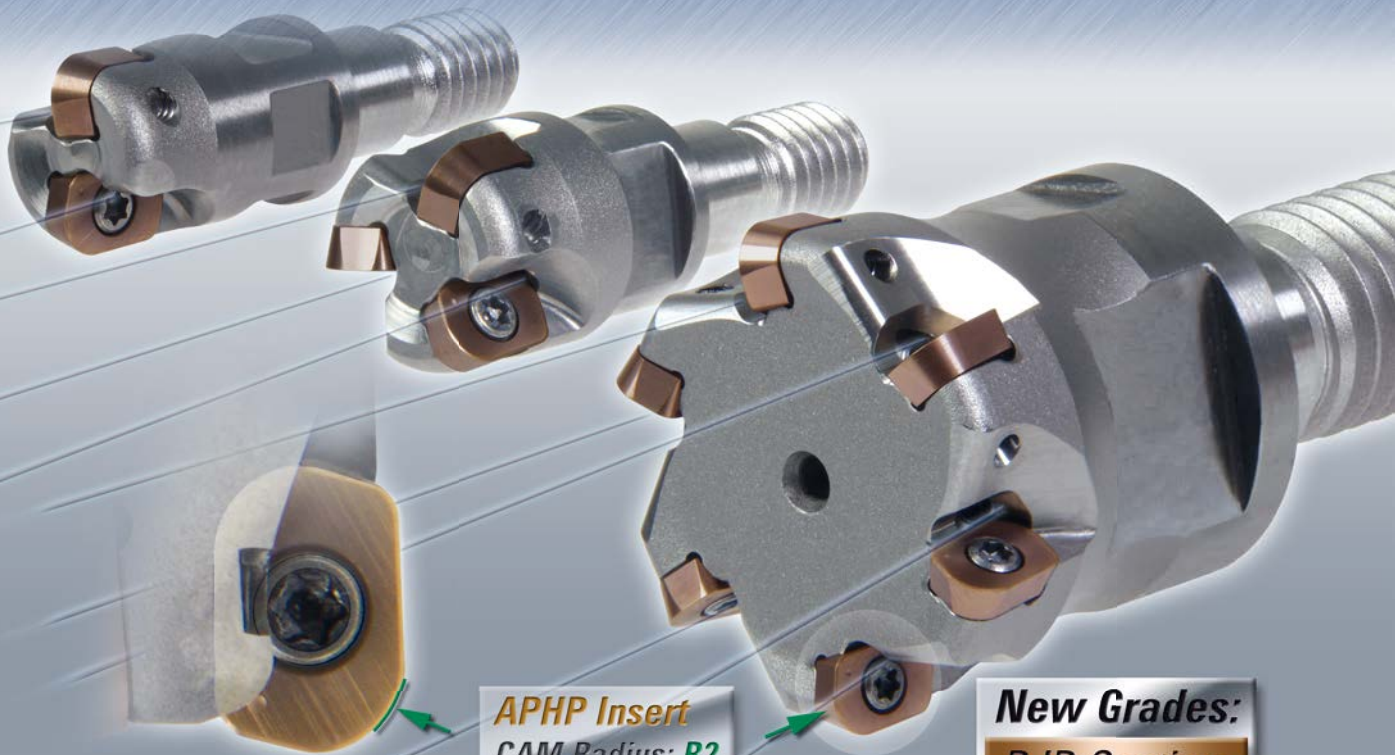
No. 330

Indexable
Milling
+ Modular Series

NEW

APHP Advanced **Pico Hard** Precision

Ø 8 ~ Ø 32 · High Hardness Cutting (HHC) **HRC 62**
High Feed Cutting (HFC)



APHP Insert
CAM Radius: R2

New Grades:
PJP-Coating
D-Coating



PJP: Micro Grain
PVD Coating

Diamond Coating
for Graphite

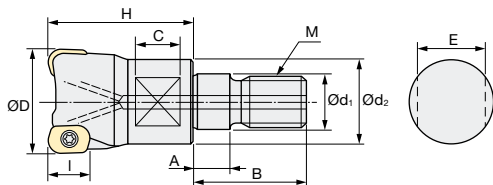
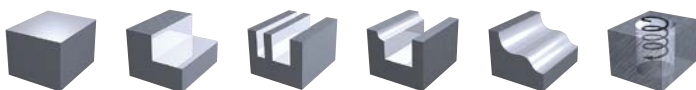


© Hitachi Tool Engineering Europe GmbH
www.high-feed-cutting.com

Indexable Milling Tools

APHP | Advanced Pico Hard Precision – Modular Type

Q max High Efficient	Jet Air Hole	▽ Roughing	▽▽ Semi-Finishing	HRC 62	No. of Teeth 1-8
--------------------------------	------------------------	----------------------	-----------------------------	------------------	----------------------------

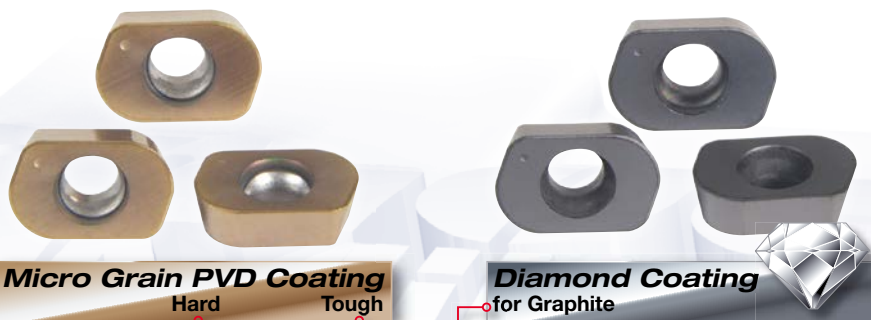
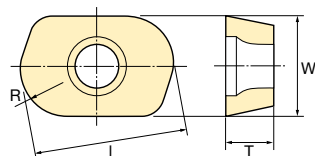


Torque on screw:	CAM Radius:
0.5 Nm	2 mm
	ØD -0.046/-0.096

Modular Type													
ID Code	Item Code	Flutes	ØD	H	Ød ₁	M	Ød ₂	A	B	C	E	I	Inserts
FH182	APHP-1008R-1-M6	1	8	19	6.5	M6	9.4	5.5	14.5	5	7	6.215	EPHW0402TN-2
FH183	APHP-1010R-2-M6	2	10	17	6.5								
FH184	APHP-1012R-3-M6	3	12	17	6.5								
FH185	APHP-1016R-4-M8	4	16	22	8.5	M8	12.8						
FH186	APHP-1020R-5-M10	5	20	25	10.5	M10	17.8						
FH187	APHP-1025R-6-M12	6	25	25	12.5	M12	20.8		10	15			
FH188	APHP-1032R-8-M16	8	32	27	17	M16	28.8	6	23	12	22		

Wrench Size

INSERTS APHP | Advanced Pico Hard Precision – Modular Type

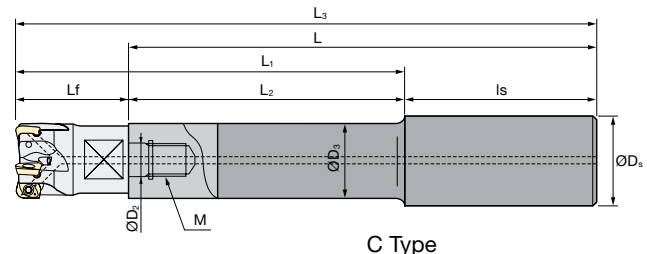
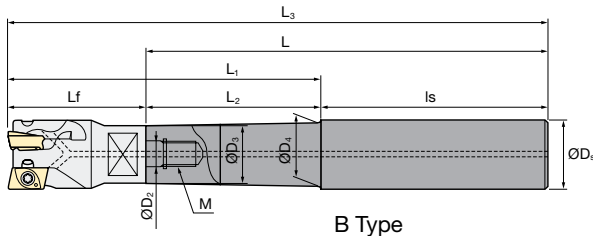
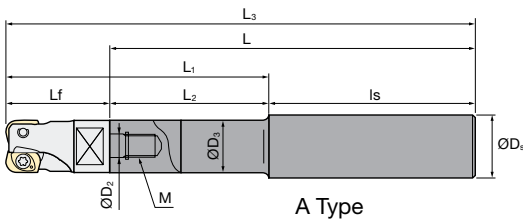


ID Code	Item Code	Tolerance Class	Coating			Size (mm)			
			PJP Coated	PJP Coated	D Coated	R	I	T	W
WF210	EPHW0402TN-2 PJP08M	H	•			2	6.215	2	4.2
WF211	EPHW0402TN-2 PJP15M			•					
WF212	EPHW0402TN-2 D08M				•				

Type	Parts Shape	Clamp Screw		Wrench	
		ID-Code	Item-Code	ID-Code	Item-Code
Modular	Cutter body APHP-10...	ET052	240-140	ET056	104-T6

Indexable Milling Tools

ASC | Carbide Shanks for Modular Mills



	ID Code	Item Code	ØD ₂	M	L ₃	L	Lf	L ₂	L ₁	ls	ØD ₃	ØD _s	ØD ₄	Type	Cutter body		
Without Airhole	FH137	ASC10-6.5-74-24	6.5	M6	94	74	20	24	44	50	9.3	10	-	A	Ø8, Ø10		
	FH138	ASC10-6.5-114-49			134	114		49	69	65							
	FH139	ASC12-6.5-74-24			94	74		24	44	50							
	FH140	ASC12-6.5-129-64			149	129		64	84	65							
With Airhole	FH141	ASC16-8.5-95-30	8.5	M8	120	95	25	30	55	65	14.5	16	15.5	B	Ø16		
	FH142	ASC16-8.5-140-75			165	140		75	100	65							
	FH143	ASC20-10.5-120-50	10.5	M10	150	120	30	50	80	70	18	20	-	C	Ø20		
	FH144	ASC20-10.5-220-50			250	220		170									
	FH145	ASC25-12.5-145-65	12.5	M12	175	145		65	95	80						23	25
	FH146	ASC25-12.5-265-65			295	265		200									
	FH147	ASC32-17-160-80	17	M16	190	160	80	110	80	28	32						
	FH148	ASC32-17-310-80			340	310			230								

- SUPER Lock milling chucks or shrink-fit holders can be used.
- Please note that the dimensions for L₃, Lf, and L₁ may be different when attached to other modular-type holders such as ASRM, AHUM, ARPFM, BCFM, ABPFM, etc.

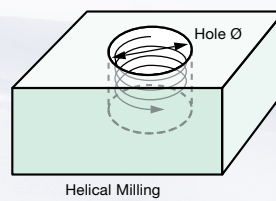
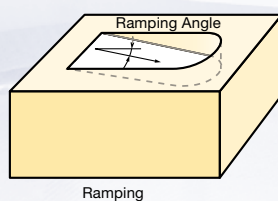
- SUPER Lock Aufnahmen oder Schrumpffutter können verwendet werden.
- Bitte beachten Sie, dass die Maße für L₃, Lf, und L₁ abweichen können, wenn andere modulare Aufnahmen verwendet werden, wie z.B. ASRM, AHUM, ARPFM, BCFM, ABPFM, usw.

For further information about Modular Chucks & Extensions please see our brochure **Indexable Modular Series No. 328**

Weitere Informationen über Modulare Werkzeugaufnahmen & Verlängerungen finden Sie in unserem Prospekt **Indexable Modular Series No. 328**



Ramping / Helical Milling



Tool diameter Ø mm	Ø8	Ø10	Ø12	Ø16	Ø20	Ø25	Ø32
Max. ramp angle °	less than 0.5° (max. 1.0°)						
Helical Milling / Hole Dia. (mm)	10-15	13-19	17-23	25-31	33-39	43-49	57-63

Product Range

Solid Carbide End Mills

micro**EndMill**

CBN
Cubic Boron Nitride

HD
COATING

Epoch21

MINIATURE

3D-Cut

Indexable Milling Tools

**Indexable
Milling**

ESM Speed End Mills

ESM
SPEED

EMC Power Drills

New Grades:

Milling Chucks

**Milling
Chucks**

Distributed by:

Hitachi Tool Engineering Europe GmbH

Itterpark 12 · 40724 Hilden · Germany · Phone +49 (0) 21 03-24 82-0 · Fax +49 (0) 21 03-24 82-30
e-Mail info@hitachitool-eu.com · Internet www.hitachitool-eu.com
© 2011 by Hitachi Tool Engineering Europe GmbH · Printed in Germany